



VERIFONE P400

The P400 countertop terminal boasts a vibrant colour display, enhancing the user experience with a fully customisable design.

Make payments simple and accept payment types from around the world including:

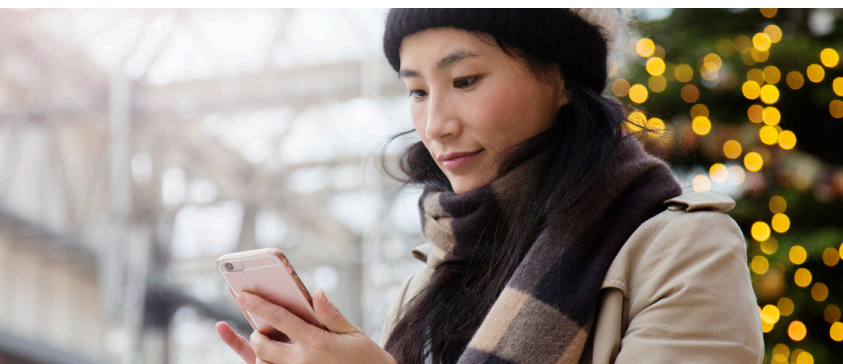
- Credit, Debit, Pre-paid, gift and loyalty cards
- Mobile digital wallets including Apple Pay, Google Pay and Alipay
- Customers can pay in their own currency with dynamic currency conversion
- Offer tax free vouchers

Additional benefits of the P400 with Worldpay:

- Offer charitable donations with Pennies
- Accept card not present (MOTO) transactions
- Fully compatible with omni-tokenization and zero value authorisations
- Offline capability
- Local language support

Secure and flexible – A next generation payment entry device (PED):

- Maximum security and compliance with end-to-end encryption
- Fully PCI PTS 5.X approved
- Reduce PCI:DSS scope with Worldpay's P2PE v2.0 solution listing
- Serial, USB and LAN/IP connectivity to suit all locations



We remove the complexity so you can accept payments from anywhere, any way around the world

CONNECT



VERIFONE P400

The P400 is fully compatible with Worldpay Total, our omnichannel solution. It brings the latest advances in Payment Entry Device (PED) technology to the till.

Features

- A large, bright and colourful display protected by Corning Gorilla Glass technology
- Optional privacy shield
- A robust, backlit keypad
- An ultra-fast Cortex A9 processor
- Ample flash memory
- Fully compliant with the latest PCI 5.X requirements
- Point to Point Encryption (P2PE v2.0) for Worldpay Total

Modern, fast and secure, the P400 is the future ready solution for countertop payments.

SPECIFICATIONS

Processor

600 MHz, 1500 MIPS, Arm Cortex-A9
32-bit RISC processor

Memory

384 MB (256 MB Flash, 128 MB SDRAM),
microSD

Display

3.5" HVGA color, capacitive touchscreen,
Corning® Gorilla® Glass technology

Operating System

V/OS (Linux-based)

Connectivity

USB, RS232, Ethernet

Card Readers

Triple track MSR: ISO 7810, 7811, 7813;
smart card reader: EMVCo-approved

Contactless

ISO 14443 Types A and B, ISO 18092-
capable, EMVCo L1 certification, MIFARE,
supports major NFC/CTLS schemes

Audio

Speaker

Power Supply

5-12 V DC, 4.8-5.2 W power consumption,
power over USB 5 V 500 mA

Security

PCI PTS 5.X-approved

Environmental

Operating temperature: 0° to 50° C (32° to
122° F); storage temperature: -20° to 60° C (-4°
to 140° F); relative humidity: 5% to 90%, non-
condensing

Physical

1167 mm L × 80 mm W × 44 mm H, 310 g

Other Standard Features

backlit keypad, privacy shield

Options/Accessories

Mounting adapter, power over Ethernet (POE
802.3af), cables backward compatible with VX