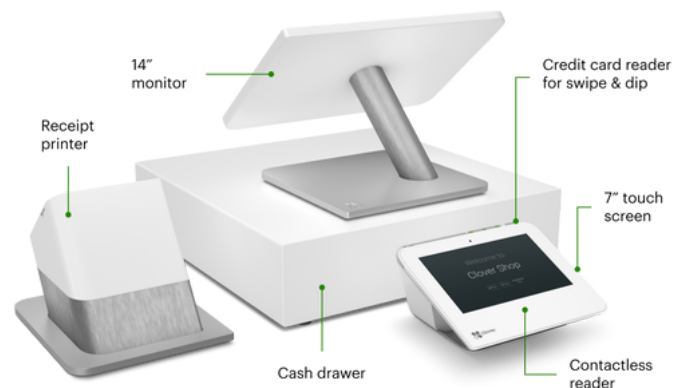




Clover Station Duo

the all-in-one POS for faster service at the counter



Help your business run more smoothly.

Station Duo is a powerful point of sale system for quick service restaurants, retail stores, and service businesses—wherever customers line up fast.

Two screens are faster than one.

Keep lines moving with a 14" HD display for you and a 7" touch screen for your guests to confirm their order, leave a tip, **redeem rewards, pay, and request a digital receipt.**

Beauty and brains all-in-one POS.

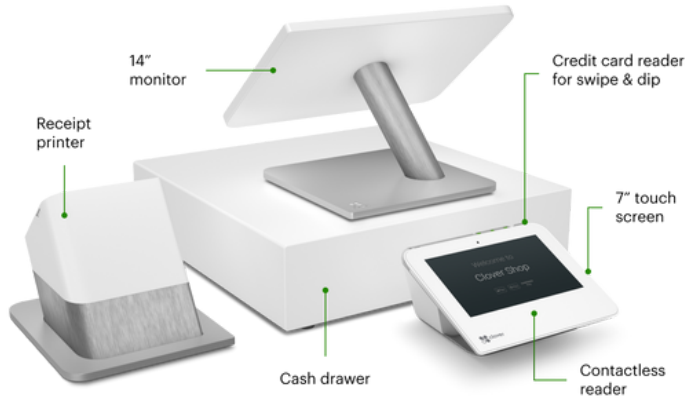
Attractive and easy-to-use hardware with a printer and included cash drawer and all the right software in one system.

It's totally expandable.

Build a system tailored to your needs. Put together multiple countertop and handheld devices with accessories like printers and scanners, and it all works together, seamlessly.

Clover Station Duo. Fast, Powerful POS System.

Created for simplicity, speed, and security



- **Easy to use and ready to go.** Station Duo is ready for work right out of the box, and with intuitive software built in, training your staff is minimal.
- **Accept every type of payment.** Let customers pay however they want. Credit or debit. Swipe, dip, or contactless payments like Apple Pay®, Google Pay™, and next generation payments like PayPal/Venmo® QR codes.
- **We've got your back.** Protect your business and customer information with end-to-end encryption, integrated chip sensors, and optional fingerprint login.

Specification

Payments: Accepts chip, swipe, and contactless payments including Apple Pay®, Google Pay® and Samsung Pay®

Screen: 14" high-definition merchant-facing touch screen and 7" customer-facing touch screen

Receipt printer: High-speed thermal dot receipt printer

Security: Clover Security end-to-end encryption

Camera & Scanner: Dual 5 mega-pixel cameras with scanning software

Connectivity: WiFi and ethernet connectivity (LTE Not Supported)

Cash drawer: Includes a bill tray, coin tray, two keys, and a security cable.

PIN Pad: Virtual keypad for PIN entry

Hardware

- 14" non-swivel, non-payment accepting tablet
- Station Duo payments terminal (customer facing display)
- Receipt printer
- Cash drawer (optional)

Not Supported

Pre-Authorized Bar Tab Not Supported.
Pre-Auth Bar Tab only available on the Solo, Mini, and Flex.

Manage your business from anywhere

- **Track, report, repeat.** Tracking and reporting is the lifeblood of your business. How was business today? This day last week, or last year? You've got the answers.
- **Help your team to succeed** Run reports to know which employees are your best sellers, manage schedules and timesheets, and set system permission levels to keep track of your biggest assets.
- **More ways to get paid** Make it easy for customers to pay you away from your counter with options like Virtual Terminal, invoicing, and recurring payments.

Build better relationships with customer loyalty

- **Get to know your customers.** Grow your business with a customers list built automatically from credit card sales.
- **Reward customer loyalty.** Your best customers deserve special attention—build rewards programs to keep them coming back.
- **Promotions with purpose.** Offer promos to your customers of what's new or timely, like a fresh spring salad or a fall sweater.

First Data

evolv

© 2017 First Data Corporation. All Rights Reserved. The CLOVER® logo and trademarks are owned by Clover Network, Inc., a wholly owned subsidiary of First Data Corporation, and are registered or used in the U.S. and many foreign countries. EMV® is a registered trademark or trademark of EMVCo LLC in the United States and other countries. www.emvco.com. Apple Pay® is a registered trademarks of Apple Inc. All trademarks, service marks and trade names referenced in this material are the property of their respective owners. Use of CLOVER® requires a Merchant Processing Agreement.

Evolv, Inc. is a registered ISO of Wells Fargo Bank, N.A., Concord, CA and Fifth Third Bank, N.A., Cincinnati, OH.